

[View online](#) for a better experience

[Subscribe](#) | [Unsubscribe](#)

[Download a printer friendly copy](#)

Saturday, July 12, 2025

[Email us](#) | [www.ajsgolf.com](http://www.ajsgolf.com) | **Tel:** 61 2 9663 1374



# Club Championship

## Matchplay rounds

We've had some great golf being played with a number of games having to go to the 19th hole to get a winner. [Click here](#) to see who went through to the next round of their respective divisions in this year's Club Championship.

Get that extra bit of advantage over you competitor! If you are looking for some last minute fine tuning of your game before the next round, be sure to [contact Alex for a lesson](#).

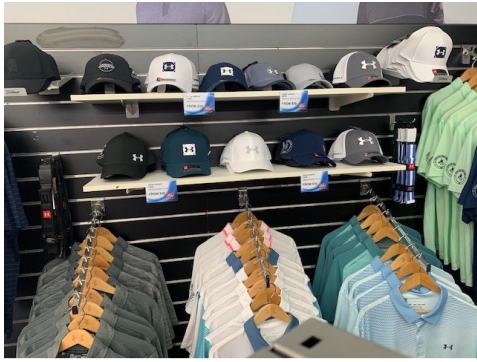


# Black Friday has come early!

**Get kitted out for summer!**

Eastlake Golf Club Pro Shop is having a major sale starting on Monday! For one week only we are offering **25% off all clothing and hats**. Including polos, pants, shorts, socks, hats, belts wet weather gear, winter gear & sunglasses.





*While stocks last! Cash or card sales only!*

**Let's find your letter**

SHORT GAME SHOTS VARY, BUT

**CONTROL SHOULDN'T**

THE NEW VOKEY SM7 WEDGE



### **EASIER TRAJECTORY CONTROL**

---

Whether you're hitting out from a greenside bunker or playing a full 70-metre pitch, you want to know that the ball will launch and fly as high and as far as you expect it to.

The new SM7 gives you this certainty. It gives you more control and confidence to try out those tough short game shots.





***Are you a digger, sweeper or neutral?***

*Knowing your swing type matters to the type of wedges you play.*

**Far 3 mistakes**



## PLAYING FOR THE PERFECT SHOT

there are 25 wedge configurations to choose from, but once we know your swing type we can set you up to take on any short game challenge with



*Many golfers base their approach to a par 3 on the ideal shot shape and then try to hit that shot. But using your natural shot shape to your advantage will help you hit more par 3 greens.*

### **Work with your NATURAL SHOT SHAPE**

---

If you know you tend to push the ball a little with a slight fade, you can count on aiming slightly left of your target on the green, instead of trying to force a straight shot or draw.



**Never set up where a straight shot gets you into trouble.**

*Don't use hazards as markers to aim because if you do hit it dead straight, you're probably going to drop shots.*



### **Know the DEADLY MISS**

---

From the tee, identify the most dangerous hazard. Then think about how your natural shot shape pulls you into those hazards or helps you evade them. By understanding your swing you can set yourself up to minimise risk and hit the green more often.

### **Better course management**

Swing improvement takes time, but good strategy brings immediate results. We'll help you make better decisions on the golf course that will put you into more scoring positions.

**Play 9 with us >**



*This mail was sent to {{contact.contact\_email}} by Alex Sutherland and is provided as a service for the members and guests of Eastlake Golf Club and has been supported and sponsored by advertisers in this email and our partner suppliers. For any queries contact us on 61 2 9663 1374.*

*Sent on behalf of Eastlake Golf Club by  
RetailTribe: 15851 Dallas Parkway | Suite 600 | Addison | TX 75001 | +1 214 561 8681*

Trouble viewing this newsletter? [View it online](#) | [Download a printer friendly copy](#)  
[Subscribe here](#) | [Unsubscribe here](#)