

[View online](#) for a better experience

[Subscribe](#) | [Unsubscribe](#)

[Download a printer friendly copy](#)

Saturday, May 04, 2024

Email us | [www.ajsgolf.com](http://www.ajsgolf.com) | Tel: 61 2 9663 1374



## The future is promising

**Hello Members,**

I have just been at the PGA Expo on the Gold Coast all week and I can't wait to get back to work and start implementing the amazing things I have learnt this week!

Check out the collage below to see what all was going on and a taste of what to expect at Eastlake in the future!

*Click to enlarge*





# Let's get the ball rolling...

## Alex the Pro's video tips

I will be running a series of video tips that will commence in the next edition of this newsletter. It's something I have been excited about for a while and can't wait to get started!

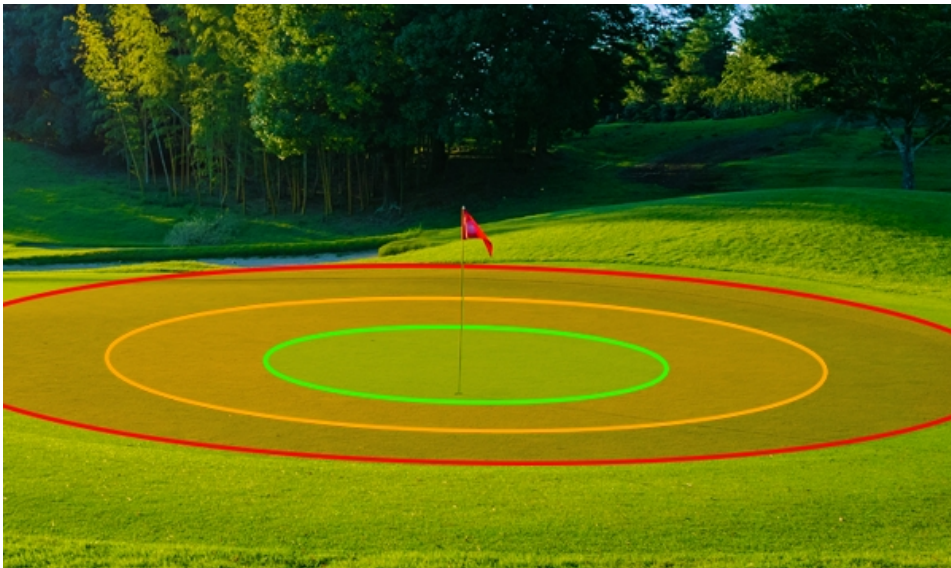
All I need from you, the Members, is to [let me know](#) what you would like me to cover in this series. Are you struggling with escaping bunkers? Want more distance off the tee? Need a fix to that nasty slice?

[Send me a message](#) with what you would like to know about the game of golf and I'll be sure to cover it in the coming weeks!

# Fitting for approach shot magic

## Three dimensions for a **BETTER APPROACH**

We want you to evolve your thinking about your approach shots. Get more demanding about the results you want. Work with us on improving your performance.



Let's start with what you should demand from the partnership that is your swing and your irons.



### **DISTANCE:**

*Adding distance means you're playing a shorter club. That means literally a shorter length club. That makes it easier to square the club face and launch the ball high and with accuracy.*

### **ACCURACY:**



*Squaring the face to target and squaring the sole to the ground at impact means you'll hit more shots tighter to the target. Technique is important. Fitting is imperative. Yes, fitting is imperative to accuracy.*

#### **STOPPING POWER:**



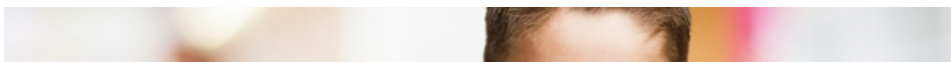
*Once your approach hits the green you want stopping power. That requires spin and an angle of descent that means the ball will sit. So, you want technology in your iron that launches your ball on a great trajectory.*

### **Now improve your approach**

Book an assessment with us now. Let us look at your swing and technique; your irons and how the technology helps you. Let us improve the three dimensions above. Improve these and it increases the number of magical moments on the course.

**Make more magic >**

# **Fall in love with golf**





This is

***NOT THE PURPOSE***

of introducing your children to the

***GREATEST GAME.***

We're not trying to create the next great tour superstar. We're trying to help junior golfers fall in love with the game of golf.





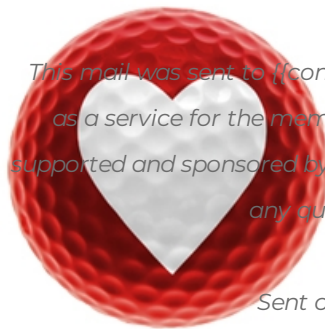


If we can do that, they'll be healthier, happier, and have a game and friends for a lifetime.

Whether they've played the game before, play the game now, or have never played the game, we'll promise you that we'll take care of them, and set them on the path



an affair with the game.



Sign your children up for one of our fun junior golf programs.

**Contact us >**

any queries contact us on 61 2 9663 1374.

Sent on behalf of Eastlake Golf Club by

RetailTribe: 15851 Dallas Parkway | Suite 600 | Addison | TX 75001 | +1 214 561 8681

Trouble viewing this newsletter? [View it online](#) | [Download a printer friendly copy](#)

[Subscribe here](#) | [Unsubscribe here](#)